



FALKEN
WE GET YOU GOING™

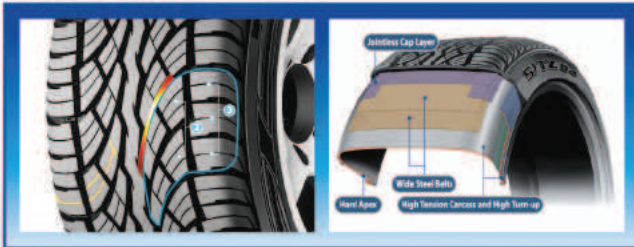
ZIEX S/TZ04

SUV & LIGHT TRUCK PERFORMANCE

- Suitable for highway and paved road use.
- High angle grooves for outstanding water drainage.
- Rigid blocks for precise control.

SIZES

305/30R26 109H XL	P235/60R16 99H	P 265/70R15 110S
P275/45R20 106H	P255/65R16 106S	275/70R16 114S
P295/45R20 114H XL	265/65R17 112H	P 265/70R17 113T
265/50R20 111H XL	275/65R17 115H	P 245/75R16 109S
295/50R20 118H XL	P215/70R16 99S	30x9.50R15 LT 104S
305/50R20 120H XL	P245/70R16 106S	31x10.50R15 LT 109S
255/55R18 109H	P255/70R15 108S	LT 235/75R15 104/101Q
275/55R20 117H XL	P265/70R16 111S	



Pattern

- High angle grooves for outstanding water drainage
- 2:3 (Center:Shoulder) pitch tread design and variable size shoulder blocks for minimal noise and resonance control.
- Rigid blocks for precise control, slot and side design for comfort and quietness.



HEAVY FULL DEPTH Siping
For excellent wet traction, delivers unparalleled levels of all season grip throughout the life of the tire.

SOLID CENTER RIB
for improved lateral handling and highway stability.

FOUR WIDE CIRCUMFERENTIAL GROOVES
deliver increased hydroplane resistance for improved wet weather performance.

HIGH ANGLE LATERAL GROOVES
with offset block position maximize water dispersion and all season traction.

TWO INTO THREE BLOCK PATTERN
ensures low noise and flat, even wear for the highest levels of cabin comfort.

WIDE STEEL BELTS
for excellent handling.

JOINT-LESS NYLON CAP PLY
increases durability at high speeds and promotes long lasting even wear.

The **ZIEX S/TZ04** offers M+S all-season performance with a symmetrical non-directional tread pattern for unrestricted rotation and superior life. In challenging weather conditions, the S/TZ04 tire displays excellent lateral handling and highway stability due to its solid center rib. Four wide circumferential grooves combined with a deep tread design, makes the S/TZ04 suitable for all weather conditions.

STAMFORD TYRES

Authorised Dealer

Customer Care | 0860 522 322